

P243/P266/P292 Fuse Blocks

Fuse Blocks for Semiconductor Fuses

Mersen P243 and P266 series fuse blocks for Form 101 fuses are glass-filled polycarbonate or laminated phenolic insulator blocks with studs to accommodate bolt-in fuses. The P292 series has a laminated phenolic insulator base with fuse clips. All studs, clips and mounting hardware are tin or zinc plated.

Dimensions

| For Use with | Amps | Catalog No. | Fig. | Dimensions - Inches | | | | | | Stud Size | Torque (in lbs) |
|----------------------|----------|-------------|------|---------------------|------|------|------|------|------|-----------|-----------------|
| | | | | A | B | C | D | E | F | | |
| A13X, A15QS | 70-450 | P243D | 2 | 4.40 | 1.50 | 2.79 | 2.20 | 2.06 | 1.17 | 1/4-20 | 36 |
| A13X, A15QS | 500-600 | P243G | 2 | 4.40 | 1.50 | 2.79 | 2.20 | 2.44 | 0.98 | 5/16-18 | 84 |
| A25X, A25Z, A30QS | 35-60 | P243G | 2 | 4.40 | 1.50 | 2.79 | 2.20 | 2.44 | 0.98 | 5/16-18 | 84 |
| A25X, A25Z, A30QS | 70-200 | P243 | 1 | 4.50 | 1.50 | 2.50 | 2.25 | 2.38 | 1.06 | 1/4-20 | 36 |
| A25X, A25Z, A30QS | 225-600 | P243G | 2 | 4.40 | 1.50 | 2.79 | 2.20 | 2.44 | 0.98 | 5/16-18 | 84 |
| A50P | 35-60 | P243G | 2 | 4.40 | 1.50 | 2.79 | 2.20 | 2.44 | 0.98 | 5/16-18 | 84 |
| A50P, A50QS | 70-200 | P243E | 2 | 4.40 | 1.50 | 2.79 | 2.20 | 2.88 | 0.76 | 1/4-20 | 36 |
| A50P, A50QS | 225-600 | P266C | 1 | 6.00 | 2.00 | 3.00 | 3.00 | 3.28 | 1.36 | 3/8-16 | 180 |
| A60X, A60Z, A70QS-4 | 35-200 | P243C | 2 | 4.40 | 1.50 | 2.79 | 2.20 | 3.62 | 0.39 | 1/4-20 | 36 |
| A60X, A60Z, A70QS-4 | 225-600 | P266A | 1 | 6.00 | 2.00 | 3.00 | 3.00 | 4.06 | 0.97 | 3/8-16 | 180 |
| A70P, A70Q, A70QS-4 | 35-100 | P243C | 2 | 4.40 | 1.50 | 2.79 | 2.20 | 3.62 | 0.39 | 1/4-20 | 36 |
| A70QS-4K | 125-200 | P266A | 1 | 6.00 | 2.00 | 3.00 | 3.00 | 4.06 | 0.97 | 3/8-16 | 180 |
| A70P, A70Q | 125-400 | P266A | 1 | 6.00 | 2.00 | 3.00 | 3.00 | 4.06 | 0.97 | 3/8-16 | 180 |
| A70P, A70Q, A70QS-4K | 450-600 | P266F | 1 | 8.00 | 2.50 | 3.00 | 4.00 | 5.09 | 1.45 | 3/8-16 | 180 |
| A100P | 35-100 | P266G | 1 | 6.00 | 2.00 | 2.50 | 3.00 | 4.25 | 0.88 | 1/4-20 | 36 |
| A100P | 125-400 | P266L | 1 | 6.00 | 2.00 | 3.00 | 3.00 | 4.66 | 0.67 | 3/8-16 | 180 |
| A120X | 1-30 | P292 | 3 | - | - | - | - | - | - | - | - |
| A30QS | 700-800 | FH25F4 | 1 | 6.00 | 2.00 | 3.00 | 3.00 | 2.66 | 1.67 | 3/8-16 | 144 |
| A50QS | 700-800 | FH50F4 | 1 | 8.00 | 2.50 | 3.00 | 4.00 | 4.21 | 1.84 | 1/2-13 | 360 |
| A50QS | 900-1000 | FH50F5 | 1 | 8.00 | 2.50 | 3.00 | 4.50 | 4.97 | 1.50 | 1/2-13 | 360 |
| A70QS-4K | 450-600 | FH70F3 | 1 | 8.00 | 2.50 | 3.00 | 4.00 | 5.09 | 1.91 | 1/2-13 | 360 |



Ratings:

Amps : 1 to 1000A

Clip Type : 1200VAC or less

Stud Type : 1000VAC or less

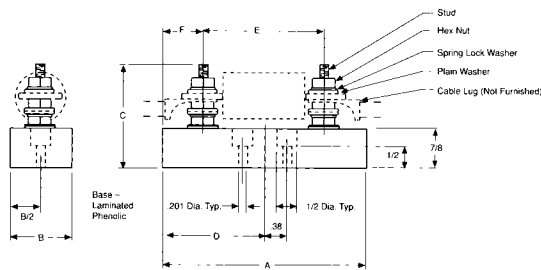


Figure 1

Note: FH Blocks are 1" thick.

* Not UL or CSA Certified

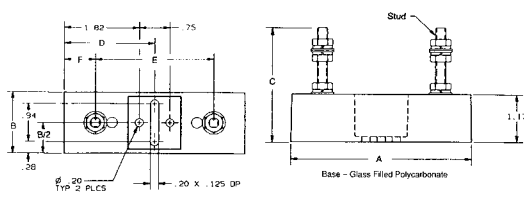


Figure 2

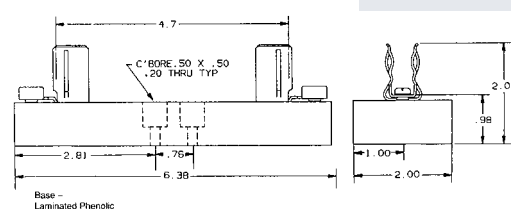


Figure 3

Approvals:

- UL Recognized Component guide IZLT2 File E52283
- CSA Certified C22.2, class 6225, File 32169



Shah & Shah Enterprise

www.shahent.co.in