

USBB UltraSafe™ Bus Bar System

Bus bar systems for use with UltraSafe class CC (USCC) and midget (USM) fuseholders.

Mersen USBB UltraSafe bus bar systems are intended for use with UltraSafe Class CC (USCC) and Midget (USM) fuseholders. The USBB delivers safe and reliable combination of circuits in a compact design. Bus bar systems reduce installation time when compared to wire solutions, offer space savings and deliver touch-safe, shock resistant solutions to panel builders and designers. 1-, 2-, and 3-phase designs available.

Highlights:

- Decrease installation time compared to wire solutions
- Save panel space with compact design and footprint
- Reduce shock hazards with touch-safe cover (included)
- Environmentally conscious, RoHS compliant and lead free
- Cuttable design offers flexibility

Applications:

- UL 508 panels
- Solar string combiner boxes
- Control panels
- Power distribution panels

Catalog Numbers

Bus Bar (1-, 2-, and 3-phase)

Catalog No.	Phase	Poles	Cross Section	Pitch	Material
USBB1PH25K4	1	4	25mm ²	17.8mm	Copper
USBB1PH25K6		6			
USBB1PH25K8		8			
USBB1PH25K12		12			
USBB2PH25K4	2	4	25mm ²	17.8mm	Copper
USBB2PH25K6		6			
USBB2PH25K8		8			
USBB2PH25K10		10			
USBB3PH25K6	3	6	25mm ²	17.8mm	Copper
USBB3PH25K9		9			
USBB3PH25K12		12			
USBB3PH25K15		15			

Feeder Terminal

Catalog No.	Wire Range	Wire Type	Torque
USBBC1	10 - 1/0 AWG	60°C Cu	50 lb-in
USBBESB1	14 - 1 AWG	75°C Cu	35 lb-in

Protective Cover

Catalog No.	Qty per Unit
USBBPC	5

End Caps

Catalog No.	Qty per Unit
USBB1PHEC	1 set*
USBB23PHEC	1 pc

* 50 pc. minimum order quantity



Ratings:

USBB Bus Bar

Volts	: 600VAC
	: 1000VDC
Amps	: 100A (End Feed)
	: 200A (Center Feed)
SCCR	: 10kA
	: 100kA (with 200A J Fuse)

USBB Feeder Terminal

Volts	: 600VAC
	: 1000VDC
Amps	: 115A Maximum
SCCR	: 10kA
	: 100kA (with 200A J Fuse)

Approvals:

- UL Listed to Standard 508, File E348854
- IEC Compliant



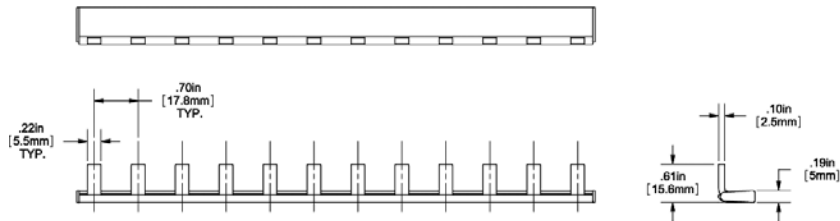
Shah & Shah Enterprise

www.shahent.co.in

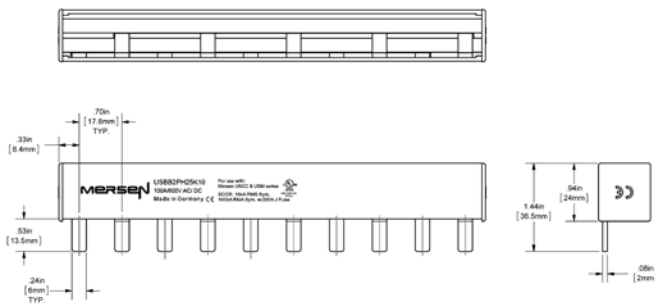
USBB UltraSafe™ Bus Bar System

Dimensions

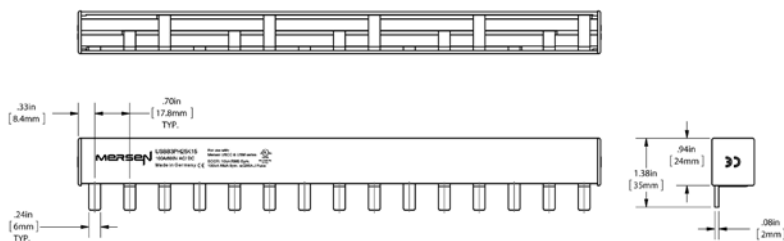
1-Phase Bus Bar – USBB1PH25K(4,6,8,12)



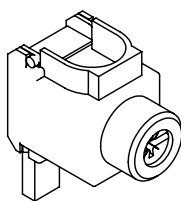
2-Phase Bus Bar – USBB2PH25K(4,6,8,10)



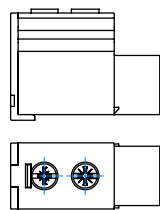
3-Phase Bus Bar – USBB3PH25K(6,9,12,15)



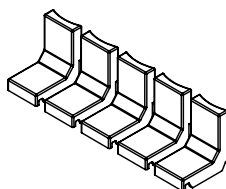
USBBC1



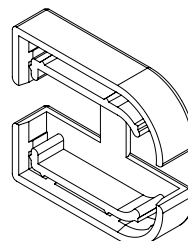
USBESB1



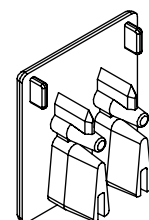
USBBPC



USBB1PHEC



USBB23PHEC



Shah & Shah Enterprise

www.shahent.co.in