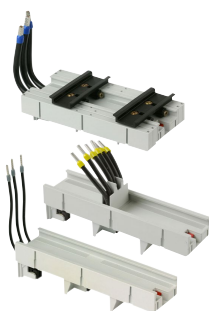


MULTIFIX® 60 Component Adapters

BUS BAR SYSTEMS

COMPONENTS FOR 60MM SYSTEMS



MULTIFIX® 60 is a system for energy distribution comprising a variety of modular combinable components. The energy distribution is carried out via copper bus bars in a 60 mm bus bar system up to 630 A, 400 V AC, 500 V AC, 690 V AC, 45–62 Hz. Short circuit withstand tested to VDE 0660 part 500 and IEC 60439-1.

MULTIFIX® 60 is suitable for triple pole, quadruple pole and quintuple pole applications.

The components of the MULTIFIX® 60 system are mounted directly without drilling. This method offers high flexibility for extension and alteration of existing installations -> reduced installation time.

MULTIFIX® 60 component adapters are also a system of modular devices. They are supplied with terminal connection cables in various cross sections, if required also without contacts. On request the standard adapter base of a width of 45 mm can be extended in steps with lateral extension parts of 9 mm each. The universal supporting bars with clamp and expanding techniques are available in various widths 45 mm to 81 mm. Depending on the application one or two bars can be snapped on. A component adapter with central terminal connection is also available.

TECHNICAL DATA OVERVIEW

Voltage AC	690 VAC
Ampere Range (A)	25 ... 80 A

FEATURES & BENEFITS

- For bus bars with width 12 - 30mm and thickness 5 - 10mm
- Modular system concept consisting of standard adapter with width of 45mm and lateral expansion parts of 9mm for individual extension in 9mm steps
- Adapter terminal cross section 4, 6, 10 and 16mm²
- Component adapter with double central terminal (2 x 3 x 4mm², 2 x 3 x 6mm²)
- Universal supporting bars in various widths 45 to 81 mm with clamp and expanding techniques top/bottom or front fixing
- Free of halogen, phosphor, silicon and CFC
Marked for classified recycling

APPLICATIONS

- Panel board builders
- Control system engineering
- Industrial plants
- Heating & air conditioning systems

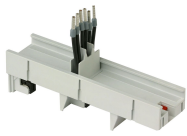
STANDARDS

- in accordance with IEC/EN 60439-1 and VDE 0660 part 500

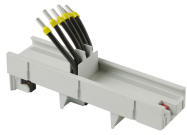


MULTIFIX® 60 Component Adapters

PRODUCT RANGE



1.001.074



1.001.163

Component adapter double central terminal

Catalog number	Reference number	Design	Weight kg ¹	Package	Nominal current
1.001.074	X1026441	width 45 mm, Doppelterminal withtig, 2 mal 3 x 4 mm ²	0.25	4	25 A
1.001.163	Y1026442	width 45 mm, central double terminal, 2 x 3 x 6 mm ²	0.28	4	35 A

¹weight in kg per piece or set including package



1.001.072



1.000.786



1.001.073



1.000.787

Component adapters for top terminal

Catalog number	Reference number	Design	Weight kg ¹	Package	Nominal current
1.001.072	S1026437	width 45 mm, terminal 3 x 4 mm ²	0.19	4	25 A
1.000.786	Q1026435	width 45 mm, terminal 3 x 6 mm ²	0.20	4	35 A
1.001.073	V1026439	width 45 mm, terminal 3 x 10 mm ²	0.23	4	63 A
1.000.787	R1026436	width 45 mm, terminal 3 x 16 mm ²	0.26	4	80 A

¹weight in kg per piece or set including package



1.000.789

Component adapters without contacts

Catalog number	Reference number	Design	Weight kg ¹	Package	Nominal current
1.000.789	M1026478	width 45 mm, without contacts, extendable	0.15	4	35 A

¹weight in kg per piece or set including package

MULTIFIX® 60 Component Adapters

PRODUCT RANGE



1.000.790 1.000.791



1.000.792 1.000.793



1.000.794

Universal supporting bars for component adapter

Catalog number	Reference number	Design	Weight kg ¹	Package
1.000.790	D1026493	width 45 mm	0.01	10
1.000.791	E1026494	width 54 mm	0.01	10
1.000.792	F1026495	width 63 mm	0.01	10
1.000.793	G1026496	width 72 mm	0.01	10
1.000.794	H1026497	width 81 mm	0.02	10

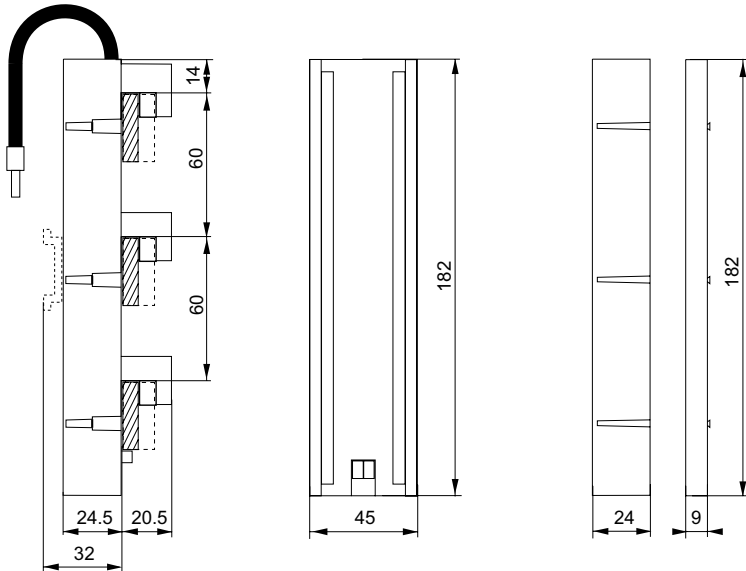
¹weight in kg per piece or set including package

TECHNICAL DATA IN ACCORDANCE WITH EN / IEC 60947

	Component adapter	Geräteadapter
Rated operational current I _e	25 to 80 A	-
Fire resistance	UL 94-V0	UL 94-V0
Glow wire test	960 °C	960 °C
Temperature resistance	200 °C	200 °C
Track resistance/comperative tracking index	CTI 600	CTI 600

DIMENSIONS

Component adapter for direct installation on to 60mm bus bar system (M02009)



Dimensions in mm

