

MULTIFIX® 60

Covering and Compartmentalizing Material

BUS BAR SYSTEMS

COMPONENTS FOR 60MM SYSTEMS



MULTIFIX® 60 is a system for energy distribution comprising a variety of modular combinable components. The energy distribution is carried out via copper bus bars in a 60 mm bus bar system up to 630 A, 400 V AC, 500 V AC, 690 V AC, 45-62 Hz. Short circuit withstand tested to VDE 0660 part 500 and IEC 60439-1.

MULTIFIX® 60 is suitable for triple pole, quadruple pole and quintuple pole applications.

The components of the MULTIFIX® 60 system are mounted directly without drilling. This method offers high flexibility for extension and alteration of existing installations -> reduced installation time.

The MULTIFIX® 60 covering and compartmentalizing system allows touch protected installation without use of a central cover.

TECHNICAL DATA OVERVIEW

Voltage AC	690 VAC
Ampere Range (A)	2 ... 630 A

FEATURES & BENEFITS

- For bus bars with width 12 - 30mm and thickness 5 - 10mm
- Touch protection for supporting edge 32mm

APPLICATIONS

- Panel board builders
- Control system engineering
- Industrial plants
- Heating & air conditioning systems

STANDARDS

- in accordance with IEC/EN 60439-1 and VDE 0660 part 500



PRODUCT RANGE



1.001.075

Compartmentalized conductor frame

Catalog number	Reference number	Design	Weight kg ¹	Package
1.001.075	F1026449	compatible to bus bar carrier 1.000.752 for supporting edge 32 mm (distance washer included)	0.06	10

¹ weight in kg per piece or set including package



SAS0142

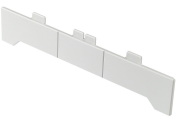
Insulated covers

Catalog number	Reference number	Design	Weight kg ¹	Package
SAS0142	D222896	insulated cover without slots for supporting edge 32 mm	0.52	5 pieces à 2 meter
SAS0143	T215573	insulated cover with slots for supporting edge 32 mm	0.52	5 pieces à 2 meter
SAS0145	W218128	lateral cover for bus bar carrier attachable to art.no. 1.001.075	0.04	10

¹ weight in kg per piece or set including package



SAS0143



SAS0145

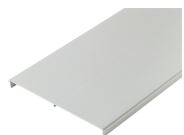


SAS0148

Cover for spare area

Catalog number	Reference number	Design	Thickness of bus bar	Width of bus bar	Weight kg ¹	Package
SAS0148	D211488	blanking support system for supporting edge 32 mm	-	-	0.05	10 pieces à 1 meter
SAS0149	F214043	cover for spare area	5 mm	12 ... 30 mm	0.68	3

¹ weight in kg per piece or set including package

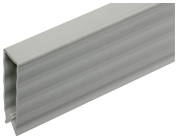


SAS0149

PRODUCT RANGE



1.000.931



1.000.932

Bus bar covers

Catalog number	Reference number	Thickness of bus bar	Width of bus bar	Weight kg ¹	Package
1.000.931	V218173	5 mm	12 ... 30 mm	0.09	10 pieces à 1 meter
1.000.932	X216128	10 mm	12 ... 30 mm	0.10	10 pieces à 1 meter

¹weight in kg per piece or set including package