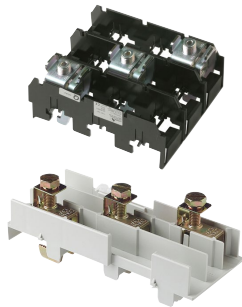


# MULTIFIX® 60 Terminal Clamp Module

## BUS BAR SYSTEMS

### COMPONENTS FOR 60MM SYSTEMS



MULTIFIX® 60 is a system for energy distribution comprising a variety of modular combinable components. The energy distribution is carried out via copper bus bars in a 60 mm bus bar system up to 630 A, 400 V AC, 500 V AC, 690 V AC, 45–62 Hz. Short circuit withstand tested to VDE 0660 part 500 and IEC 60439-1.

MULTIFIX® 60 is suitable for triple pole, quadruple pole and quintuple pole applications.

The components of the MULTIFIX® 60 system are mounted directly without drilling. This method offers high flexibility for extension and alteration of existing installations -> reduced installation time.

MULTIFIX® 60 terminal clamp module 630 A, triple pole is used for current incoming and outgoing. It offers the possibility to connect on to other bus bar systems. Terminal clamp modules are available in two designs with cable connection for round and flat terminals. They can be installed on to bus bars with a width of 20, 25 and 30 mm and a thickness of 5 and 10 mm.

## TECHNICAL DATA OVERVIEW

Voltage AC	690 VAC
Ampere Range (A)	2 ... 630 A

## FEATURES & BENEFITS

- For bus bars with width 20, 25 und 30mm and thickness 5 - 10mm
- Terminal clamp module for current incoming and outgoing
- Possibility to connect on to other bus bar systems
- Cable termination by frame clamp for round and flat terminals  
round terminal 7-300 mm<sup>2</sup> round solid  
flat terminal 11 x 21 x 1 (x2)
- Tightening torque 40 Nm

## APPLICATIONS

- Panel board builders
- Control system engineering
- Industrial plants
- Heating & air conditioning systems

## STANDARDS

- in accordance with IEC/EN 60439-1 and VDE 0660 part 500



# MULTIFIX® 60 Terminal Clamp Module

## PRODUCT RANGE



1.001.047

### Terminal clamp module 630 A triple pole

Catalog number	Reference number	Design	Weight kg <sup>1</sup>	Package
1.001.047	V1026416	round terminal 70-300 mm <sup>2</sup> round solid	0.25	1
1.001.853	K1026430	flat terminal 11 x 21 x 1 (x 2) round solid	1.50	1

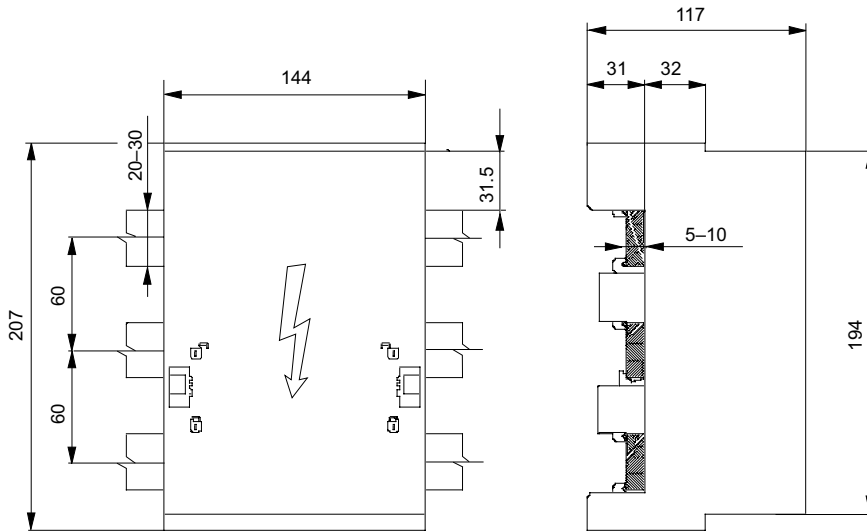
<sup>1</sup>weight in kg per piece or set including package

## TECHNICAL DATA IN ACCORDANCE WITH EN / IEC 60947

	Terminal module
Fire resistance	UL 94-V0
Glow wire test	960 °C
Temperature resistance	200 °C
Track resistance/comperative tracking index	CTI 600

## DIMENSIONS

### Terminal module 630A triple pole for 60mm bus bar system (M02013)



Dimensions in mm