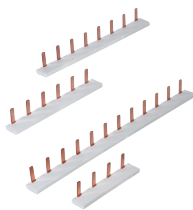


Bus Bars for USGM1HEL

ACCESSORIES FOR FUSES & FUSE SYSTEMS

WIRING BUS BARS



Mersen wiring bus bars for USG fuse-holders series are designed for safe and efficient termination of Mersen LV fuse-holders. They are intended for use with UltraSafe Class CC (USGCC) and Midget (USGM) fuseholders including for photovoltaic application series USGM1HEL1 and USGM1IHEL.

The wiring bus bar system delivers safe and reliable combination of circuits in a compact design. Compared to wire solutions it reduces installation time, offers space savings and delivers touch safe, shock resistant solutions to panel builders and designers.

1-phase design available.

TECHNICAL DATA OVERVIEW

Amper (A)	63 A
Mounting	for 4 to 12 units
Number of Poles	1

FEATURES & BENEFITS

- Decrease installation time compared to wire solutions
- Save panel space with compact design and footprint
- Reduce shock hazards with touch safe cover (included)
- Environmentally conscious, RoHS compliant and lead free
- Cutable design offers flexibility

APPLICATIONS

- Solar string combiner boxes
- Control panels
- Power distribution panels

STANDARDS

- IEC Compliant
- IEC 60439-2



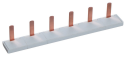
Bus Bars for USGM1HEL

PRODUCT RANGE

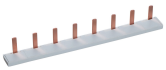
Wiring bars



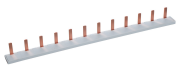
USGBB1PH10K4



USGBB1PH10K6



USGBB1PH10K8

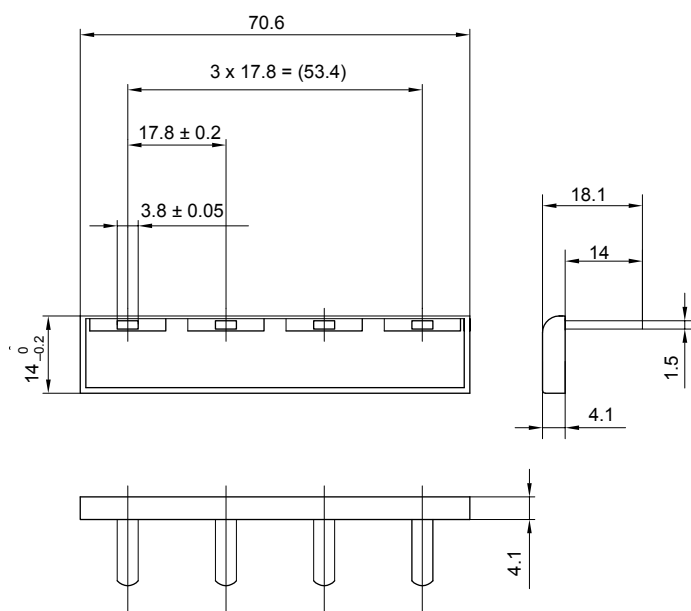


USGBB1PH10K12

Catalog number	Reference number	Rated current I_n	Number of poles/phases	Design	Cross section	Length	Weight	Package
USGBB1PH10K4	H1040849	63 A	1	for 4 units, partition 17,8mm (distance of poles)	10 mm ² Cu	70.6 mm	14 g	40
USGBB1PH10K6	J1040850	63 A	1	for 6 units, partition 17,8mm (distance of poles)	10 mm ² Cu	106.2 mm	22 g	30
USGBB1PH10K8	K1040851	63 A	1	for 8 units, partition 17,8mm (distance of poles)	10 mm ² Cu	141.8 mm	29.7 g	20
USGBB1PH10K12	L1040852	63 A	1	for 12 units, partition 17,8mm (distance of poles)	10 mm ² Cu	212 mm	45 g	20

DIMENSIONS

Wiring bus bar for 4 x single pole unit

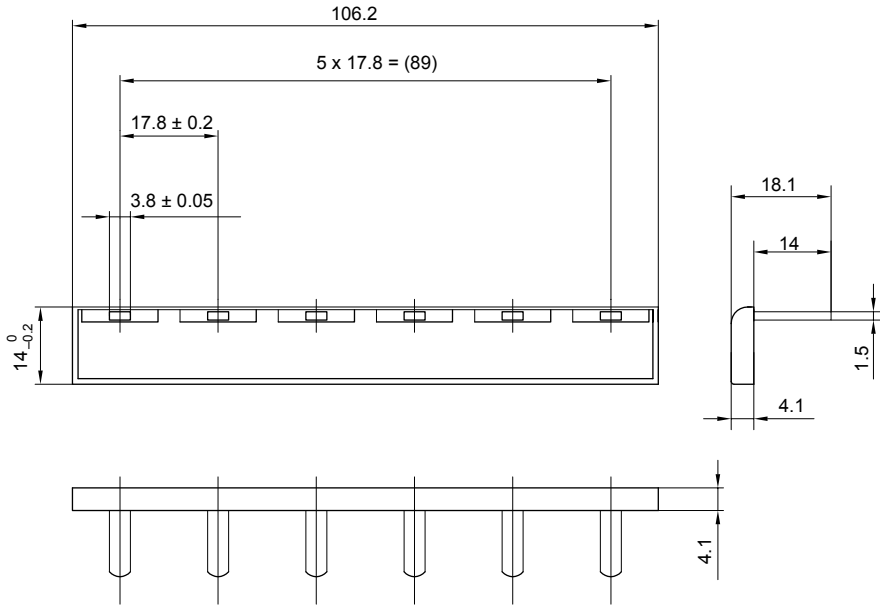


Dimensions in mm

Bus Bars for USGM1HEL

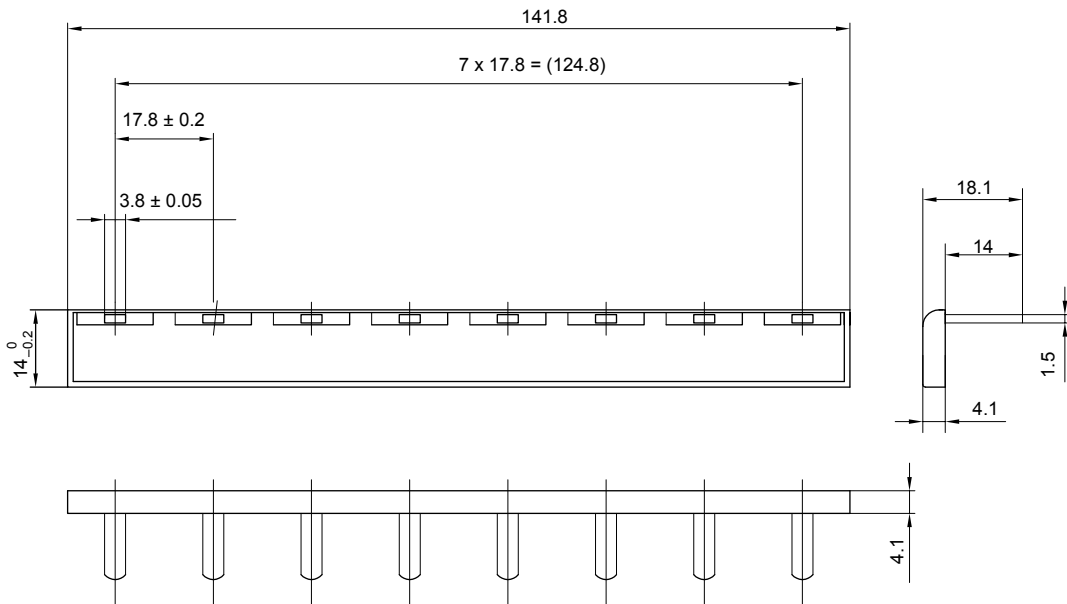
DIMENSIONS

Wiring bus bar for 6 x single pole unit



Dimensions in mm

Wiring bus bar for 8 x single pole unit

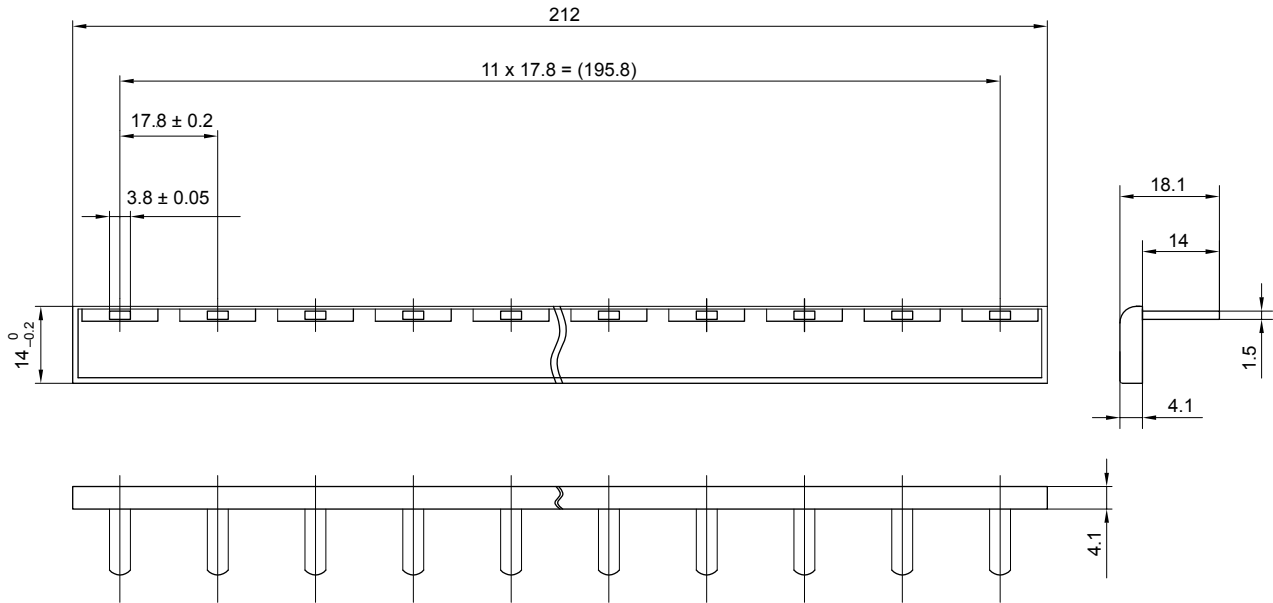


Dimensions in mm

Bus Bars for USGM1HEL

DIMENSIONS

Wiring bus bar for 12 x single pole unit



Dimensions in mm